

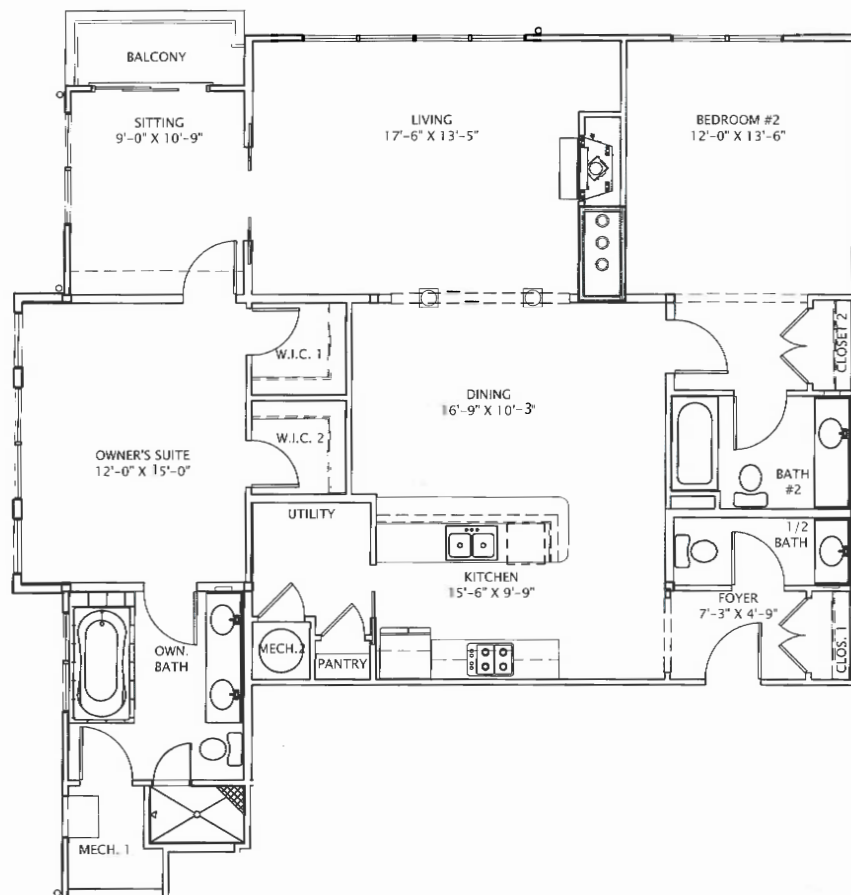
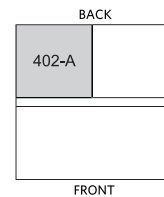
THE LAUREL 2B

1,585 SQ. FT.

The Laurel 2B achieves the perfect balance between intimacy and spaciousness. This one-level home has a private foyer that leads into the dining area, which connects with a large living room complete with fire-place. A nearby sitting room affords a peaceful retreat for work or reflection. An adjoining balcony allows for long, leisurely and private visits outdoors. The owner's suite features two walk-in closets, a roomy bath and a large bay window that provides lots of natural light. This is a 4th floor only floor plan.

In addition to various customization options, the following features are standard in this mansion-style home:

- Hardwood Floors
- Kohler® Faucets
- Visual Comfort & Co. Designer Light Fixtures
- Ceramic Tile
- Black GE® Appliances
- Maple Cabinets
- Gas Fireplace
- 2-Piece Crown Molding
- Soaking Tub and Separate Shower
- Recessed Lighting
- 9' Ceilings*
- Security System
- Private Balcony
- Landscaping, Irrigation and Professional Property Maintenance Included
- Parking Space Available



THIS INFORMATION IS DEEMED RELIABLE BUT NOT GUARANTEED. All details, dimensions, square footage and illustrations are approximate and may vary from actual plans and specifications. **This plan may be Reverse or Per Plan depending on which building the home is purchased in.**

* Variances may occur depending on the unit and location.



Monument Square