



1239 Hyde Lane,
Richmond, Virginia 23229
(804) 750-1870

GRAYSONHILL.COM

Kingston



This grand home is part of our Executive building. The Kingston seamlessly blends formal and informal rooms, with ten-foot ceilings throughout the ground floor, which features a beautiful kitchen with ample counter space, morning room, study and spacious family room. The second floor offers nine-foot ceilings, an owner's suite with charming sitting room, his and her closets, and luxurious bath.

STANDARD FEATURES

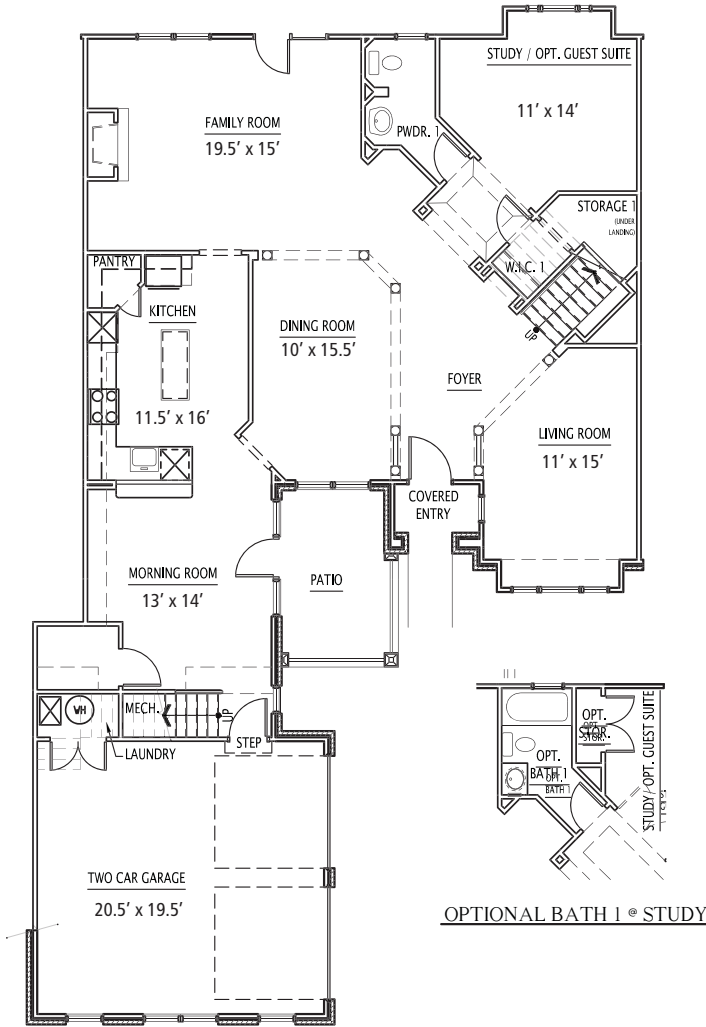
- 10' ceilings on ground floor
- Gas fireplace with slate hearth and surround
- Soaking tub and shower with ceramic tile surround in owner's suite
- Professionally designed kitchen
- Kitchen appliances by GE®
- Dual-zone heating and air conditioning systems
- Modern interior fire suppression system
- Two-car garage with remote entry
- Brick and Hardiplank® siding
- Professional landscaping and lawn maintenance

Grayson Hill recalls a time when gentility reigned and skilled craftsmen took pride in their work. Each custom home embodies these traditions while meeting the exacting demands of today's luxury homeowner.



OWNER'S SUITE UP WITH OPTIONAL BONUS ROOM — APPROX. 3,200 SQ. FT - 3,500 SQ. FT.

1ST GROUND FLOOR
Ceilings: 10'



2ND SECOND FLOOR
Ceilings: 9'

