



The Neighborhood
OF LIBBIE MILL - MIDTOWN

TOWNHOMES

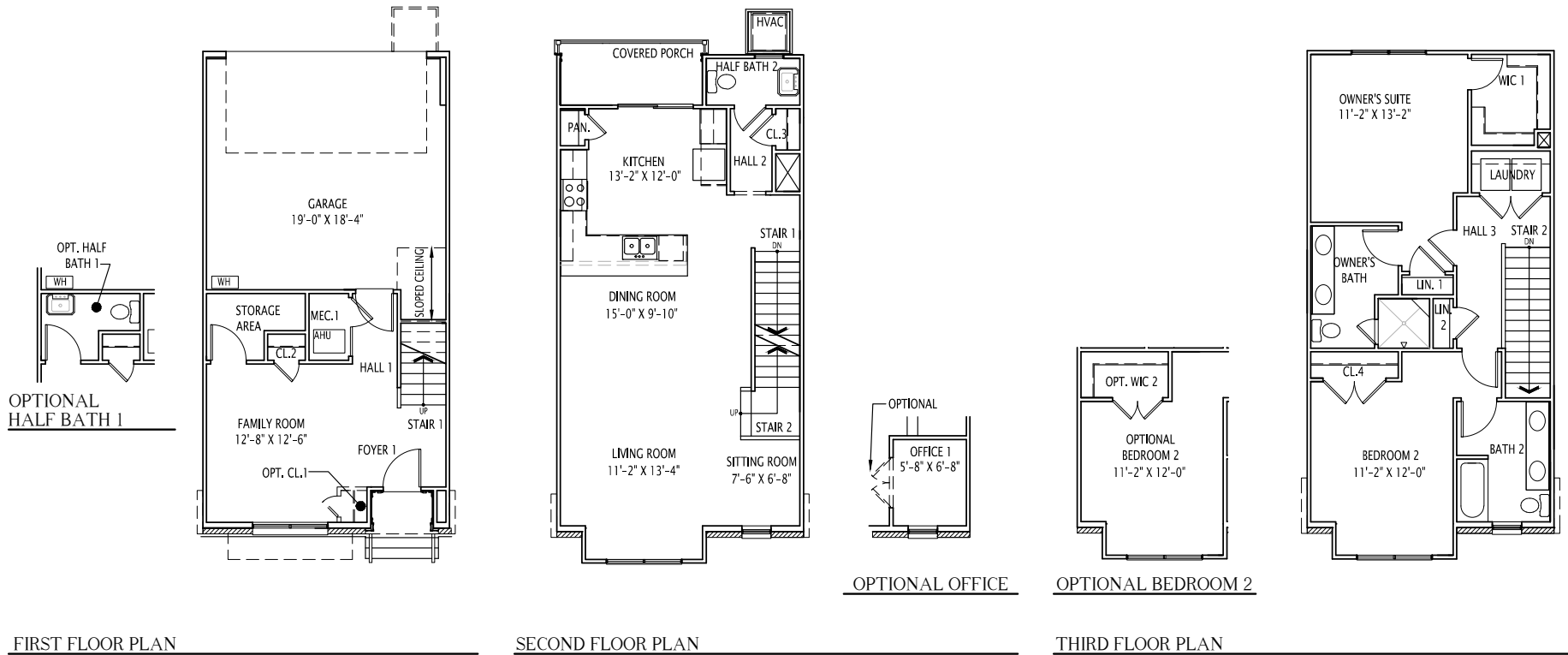
Inspired by the familiar corridors of Richmond's historic Fan District, the three level Townhomes in The Neighborhood of Libbie Mill - Midtown deliver a new interpretation to traditional architecture. With over 40 potential elevation styles, our Townhomes represent a unique and authentic blend of materials and craftsmanship.



The Neighborhood

OF LIBBIE MILL - MIDTOWN

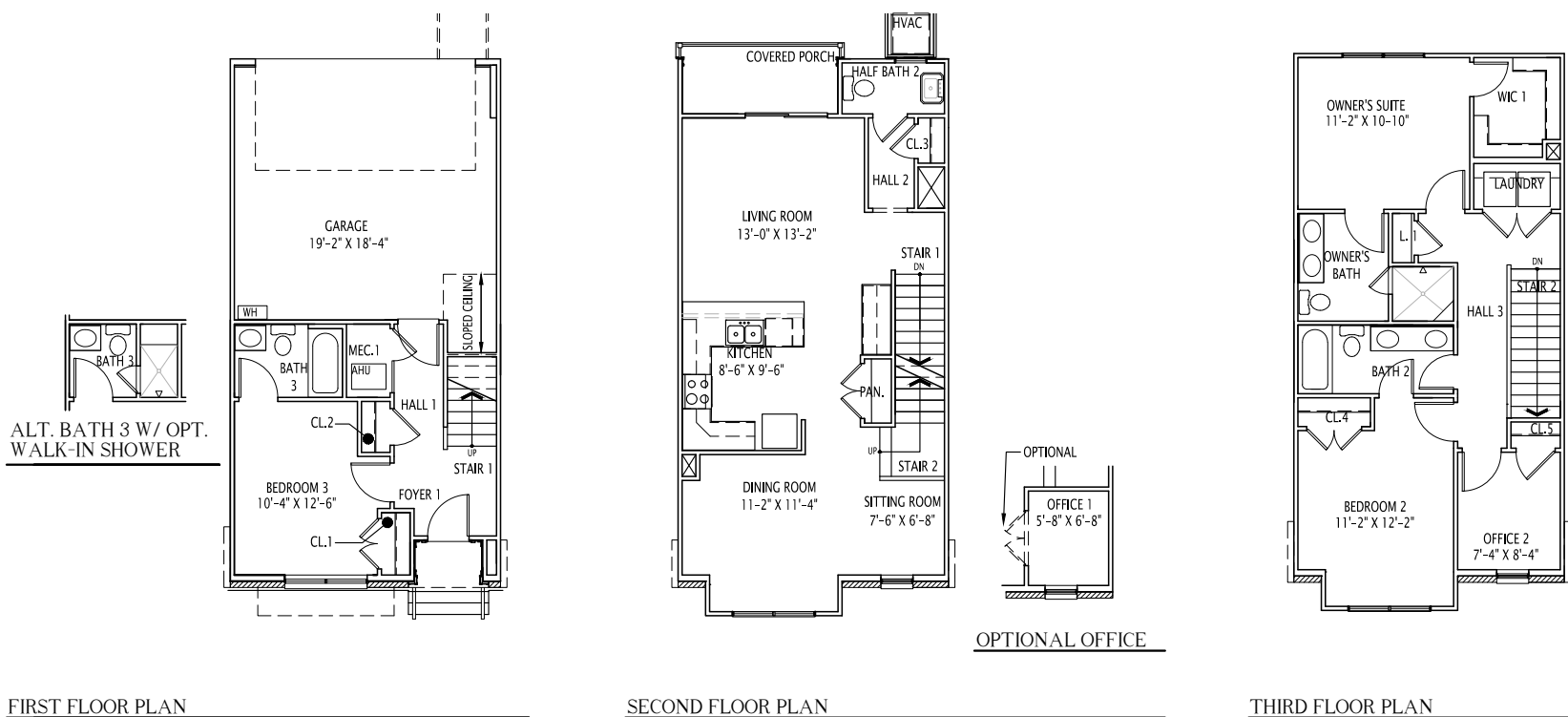
THE POLLARD STANDARD 1,802 sq. ft.



The Neighborhood

OF LIBBIE MILL - MIDTOWN

THE POLLARD ALTERNATE 1,802 sq. ft.



Learn more and sign up for updates at libbiemill.com



This information is deemed reliable but not guaranteed. All details, dimensions, square footage and illustrations are approximate and may vary from actual plans and specifications.